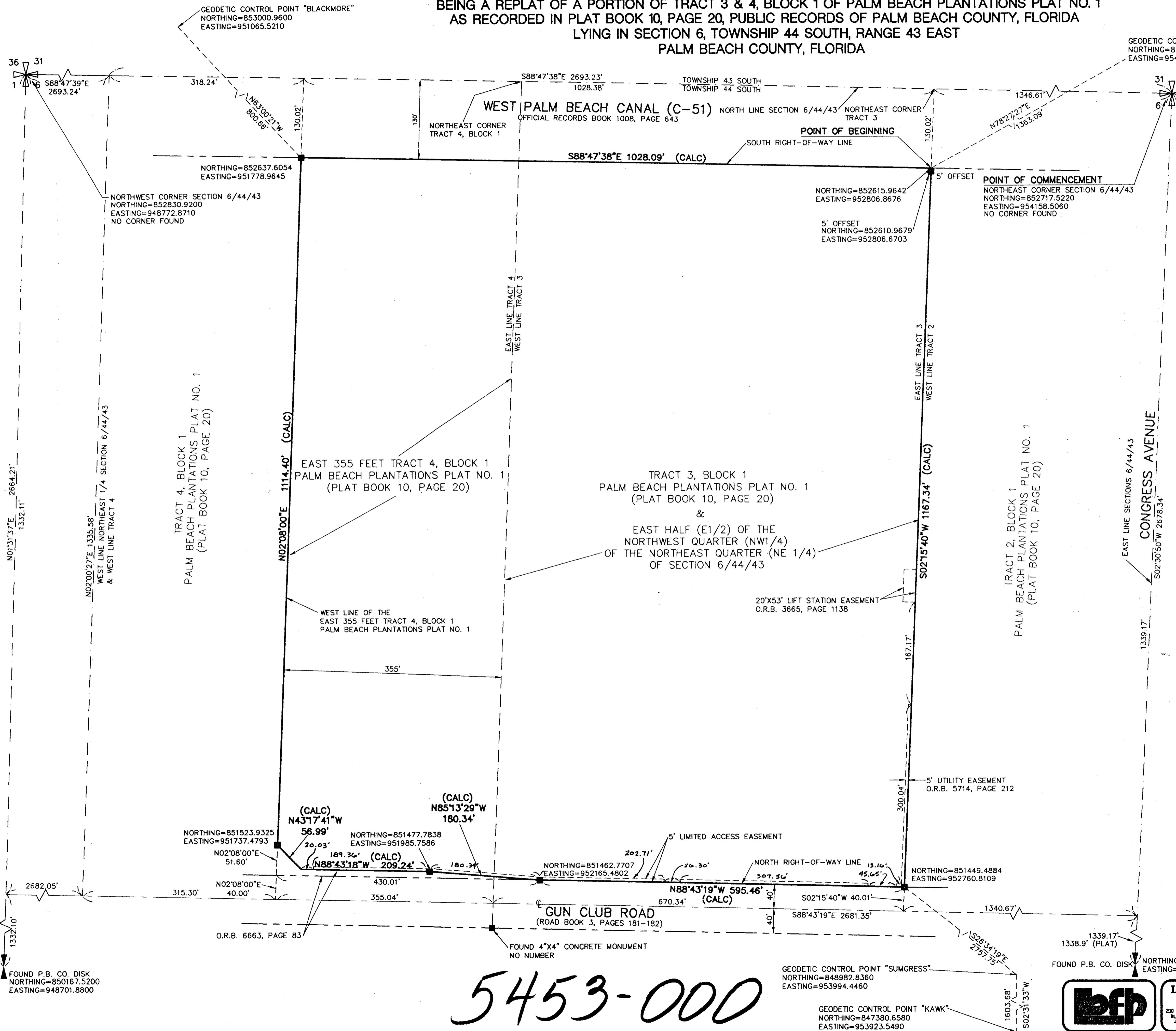


S.F.W.M.D. GUN CLUB ROAD PLAT

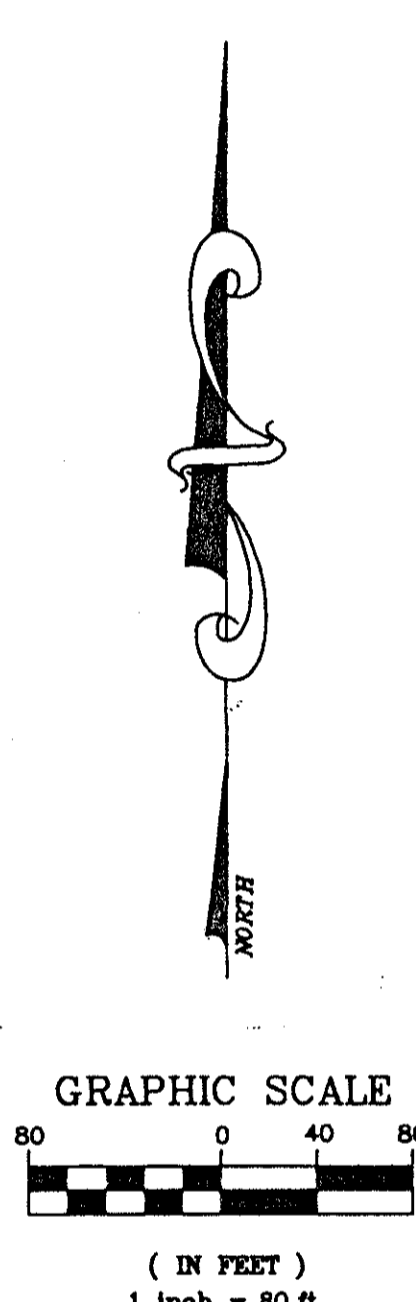
BEING A REPLAT OF A PORTION OF TRACT 3 & 4, BLOCK 1 OF PALM BEACH PLANTATIONS PLAT NO. 1
AS RECORDED IN PLAT BOOK 10, PAGE 20, PUBLIC RECORDS OF PALM BEACH COUNTY, FLORIDA
LYING IN SECTION 6, TOWNSHIP 44 SOUTH, RANGE 43 EAST
PALM BEACH COUNTY, FLORIDA

5453-000

196



SUBDIVISION * SFWMD Gun Club Road Plat
BOOK 88 PAGE 196
FLOOD MAP # 14.5B
CHAD # 17 ZONING PD
SE
PLD NAME Palm Beach Plantations S
1A2
275



COORDINATES SHOWN ARE GRID
DATUM = NAD 83, 1990 ADJUSTMENT
ZONE = FLORIDA EAST
LINEAR UNIT = US SURVEY FOOT
COORDINATE SYSTEM 1983 STATE PLANE
ALL DISTANCE ARE GROUND
SCALE FACTOR = 1.0000417
GROUND DISTANCE X SCALE FACTOR = GRID DISTANCE
TRANSVERSE MERCATOR PROJECTION

NOTE:
PROPERTY SUBJECT TO PERPETUAL ACCESS EASEMENT PER O.R.B. 6562, PAGE 134.

LEGEND:
 ■ - DENOTES P.R.M. (PERMANENT REFERENCE MONUMENT) FOUND 3/4" IRON PIPE DISK
 O.R.B. - DENOTES OFFICIAL RECORDS BOOK SET IN CONCRETE STAMPED
 C - DENOTES CENTERLINE "SFWMD" ALSO STAMPED
 P.B. CO. - DENOTES PALM BEACH COUNTY "LBFH-PRM-PLS 453"

BEARING BASE:
THE NORTH LINE OF SECTION 6, TOWNSHIP 44 SOUTH, RANGE 43 EAST, IS TAKEN TO BEAR SOUTH 88°47'38" EAST, AND ALL OTHER BEARINGS SHOWN HEREON ARE RELATIVE THERETO.

82/196

5453-000

P:\197-0482\5\plat-s2 Tue May 26 08:44:06 1998 Plot Mode: FINAL

FOUND P.B. CO. DISK
NORTHING=850167.5200
EASTING=948701.8800

GEODETIC CONTROL POINT "SUMGRESS"
NORTHING=848982.8360
EASTING=953994.4460

GEODETIC CONTROL POINT "KAWK"
NORTHING=847380.6580
EASTING=953923.5490

FOUND P.B. CO. DISK
NORTHING=850041.6360
EASTING=954041.0380



LINDAHL, BROWNING, FERRARI, & HELLSTROM, INC.
CONSULTING ENGINEERS, SURVEYORS & MAPPERS
 210 JUPITER LAKES BLVD. SUITE 201 JUPITER, FL 33468
 2400 SE. MONTEREY ROAD SUITE 201 FT. PIERCE, FL 34996
 2000 PALM BEACH LAKES BLVD. SUITE 702 WEST PALM BEACH, FL 33409

2 2
Sheet of

PLT-SFWMD.DWG 97-0482